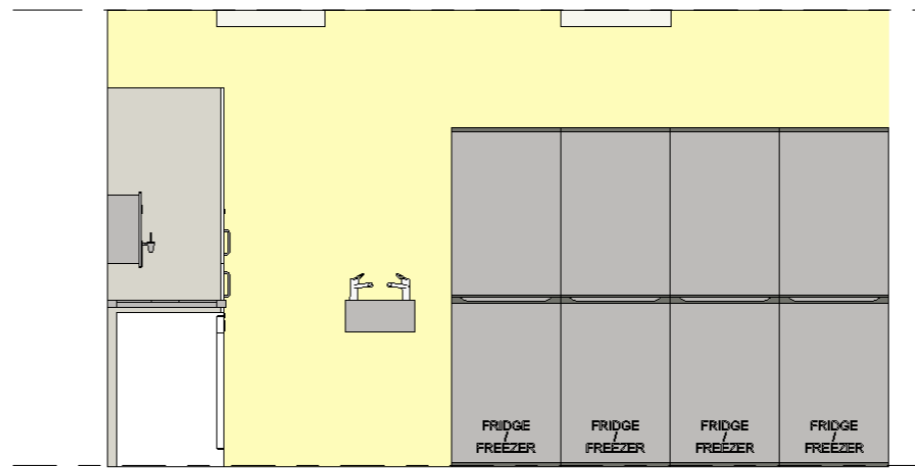


1 Elevation 1 - a
1 : 20



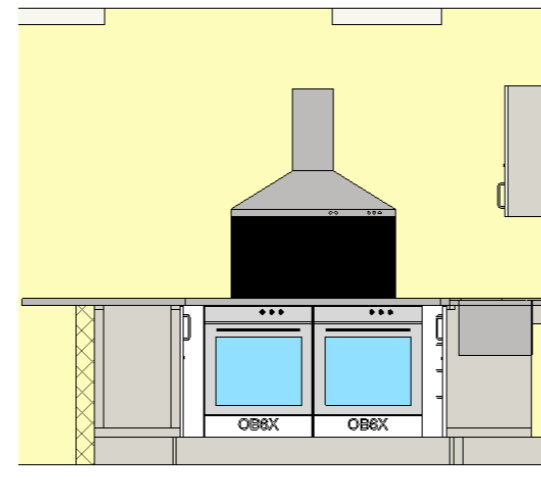
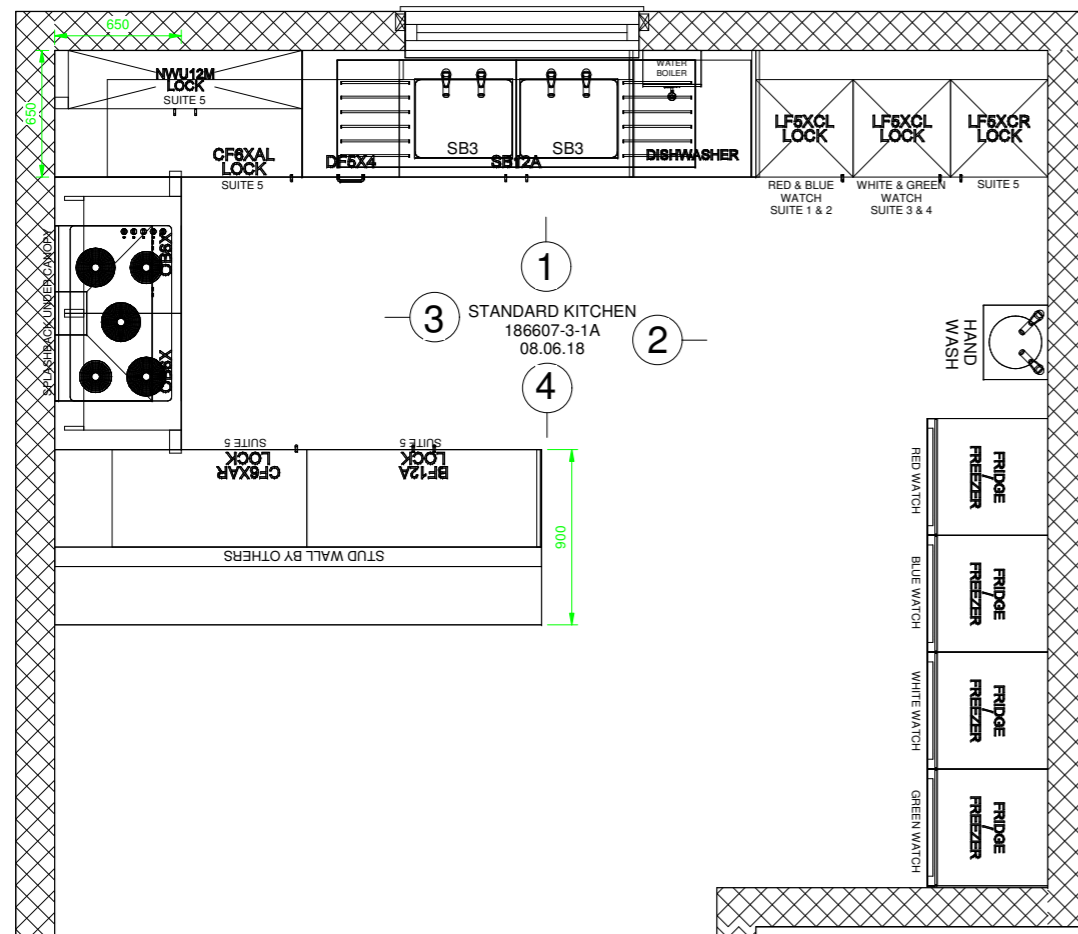
2 Elevation 2 - a
1 : 20

KEY

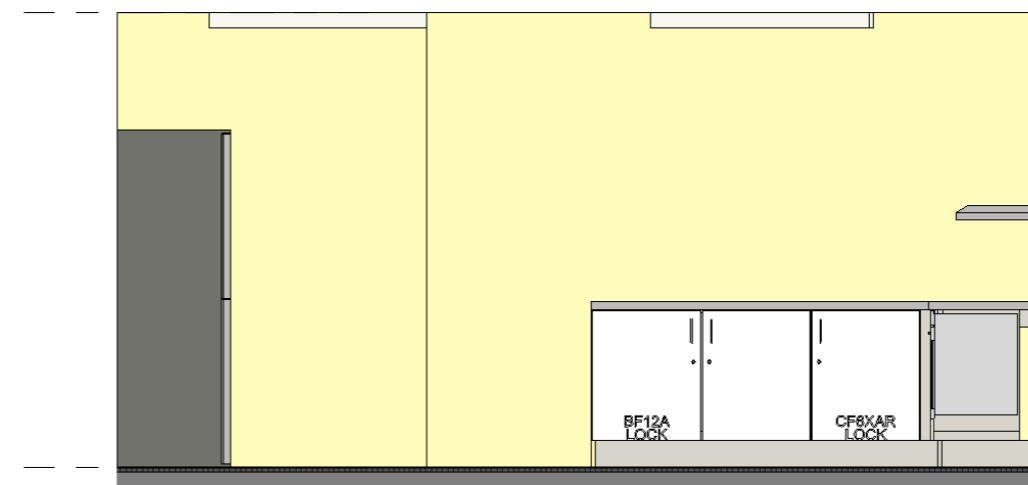
All kitchen units to be Stainless steel

- Tall units for food storage (min. 0.36 cubic meters storage per watch cupboard)
- 2No. S/S sink/ drainers
- Five ring induction hob with base stand and extract hood above
- Breakfast bar with undercounter cupboards
- Handwash basin by armitage shanks with splash back.
- Hand dryer
- Dining table and chairs
- CCTV monitor

- Colours and finishes to CA Approval
- S/s work surfaces throughout
- 4 N° lockable cupboards for each watch
- Ovens & hobs to have automatic shut off when mobilisation system activated



3 Elevation 3 - a
1 : 20



4 Elevation 4 - a
1 : 20